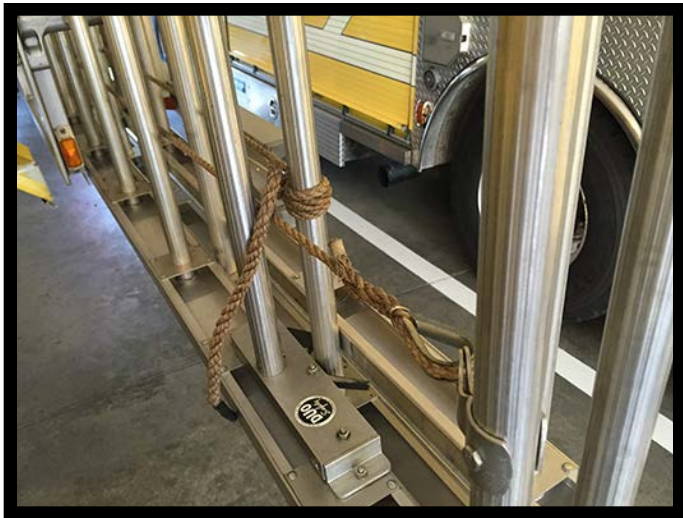


Throw Back to Basics

Ground Ladder Markings



Tie the halyard to the bed section, this eliminates having to untie the ladder for use for life saving operations on the fire ground.



Mark the balance point on the ladder, this is may not be the center. The balance point gives a quick reference for carrying the ladder for one firefighter.



Mark the ladder length, mark both on the beam and the butt, this allows for the ladder's length to be clearly identified.

Fire Engineering®

